




LEASE RATE: \$15/SF NNN | 2,367 SF SPACE FOR LEASE

DEMOGRAPHICS

	1 mile	3 miles	5 miles
Estimated Population	12,493	72,857	155,155
Avg. Household Income	\$148,103	\$176,161	\$163,900

- Prime location on Metcalf Avenue
- Accessible from 69 Highway via 135th Street & 151st Street
- Ample parking and great monument signage on Metcalf
- Join O'Reilly Auto Parts, Burnett Automotive Goodyear, Pho Sai Gon Restaurant, Enterprise Rent-A-Car, and Thai Zappz Authentic Cuisine

 [CLICK HERE TO VIEW MORE LISTING INFORMATION](#)

For More Information Contact: *Exclusive Agent*
DARREN SIEGEL | 816.412.7377 | dsiegel@blockandco.com

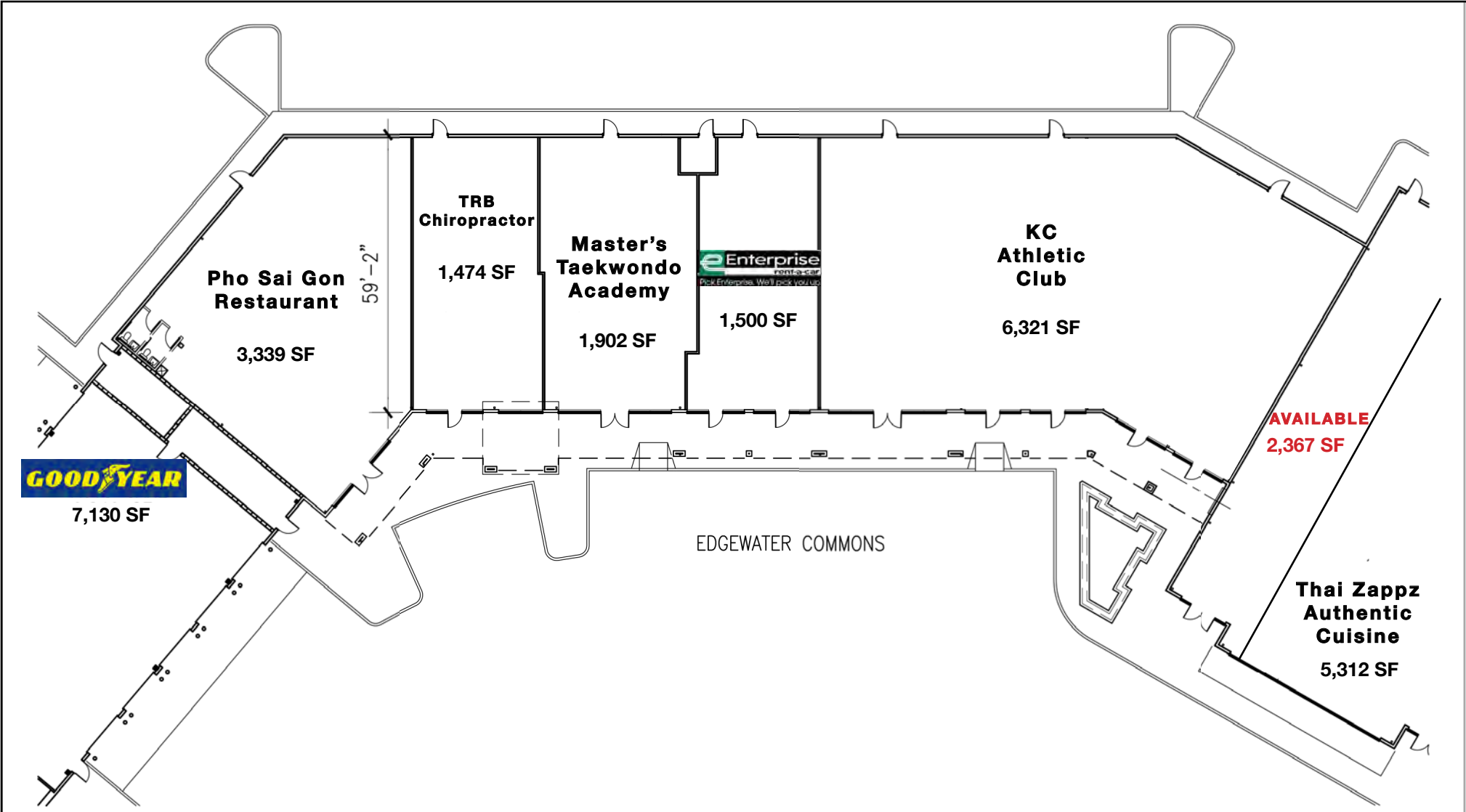


EDGEWATER CROSSING S.C.

14857-14893 Metcalf Ave, Overland Park, KS

SPACE
FOR
LEASE

SITE PLAN



Edgewater Commons Shopping Center

Suite Plan



PHOTOS



PHOTOS



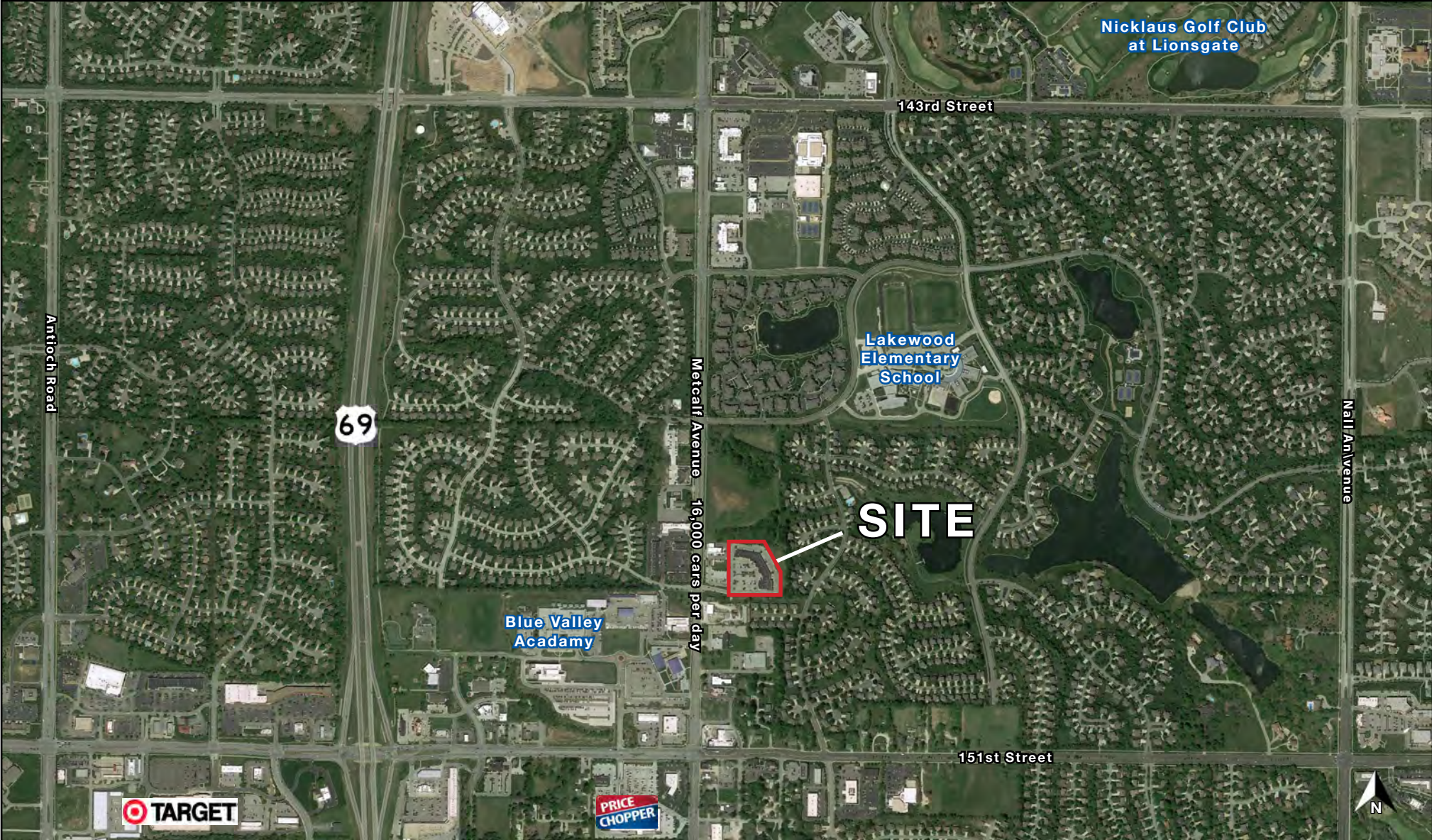


EDGEWATER CROSSING S.C.

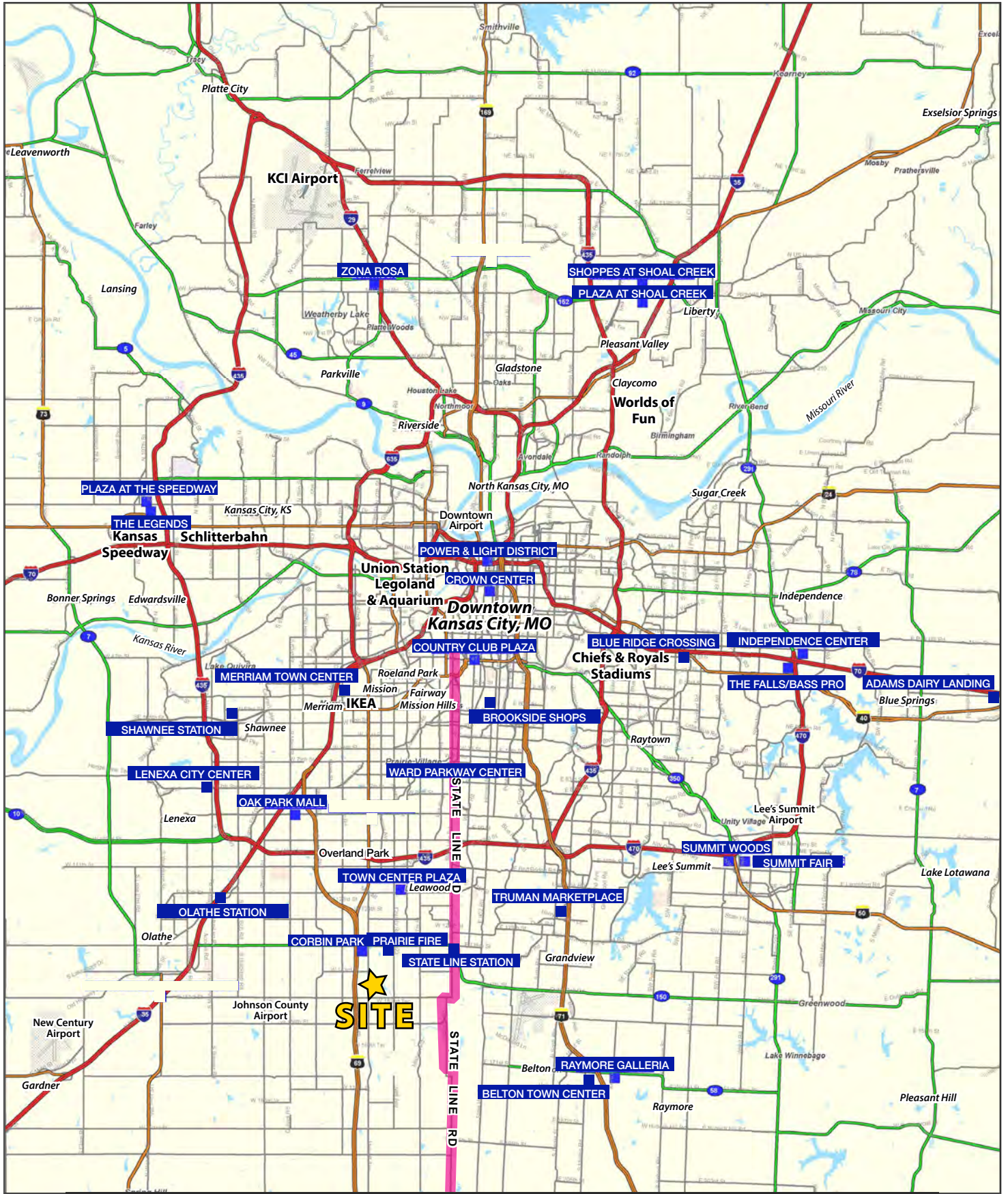
14857-14893 Metcalf Ave, Overland Park, KS

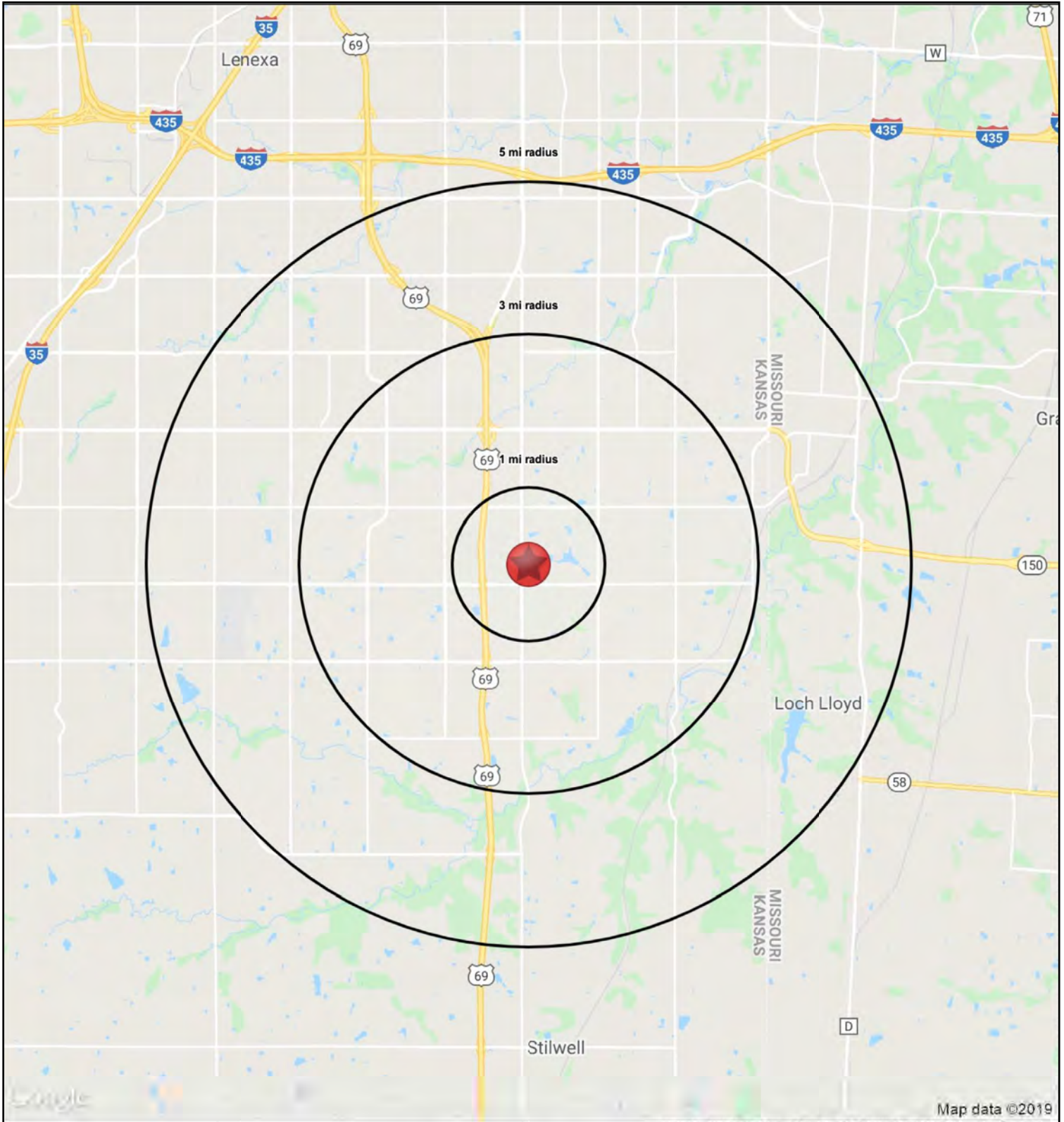
SPACE
FOR
LEASE

AERIAL



All information furnished regarding property for sale or lease is from sources deemed reliable, but no warranty or representation is made as to the accuracy thereof and the same is subject to errors, omissions, changes of prices, rental or other conditions, prior sale or lease or withdrawal without notice.







EDGEWATER CROSSING S.C.

14857-14893 Metcalf Ave, Overland Park, KS

**SPACE
FOR
LEASE**

14857-14893 Metcalf Avenue		1 mi radius	3 mi radius	5 mi radius
Overland Park, KS 66223				
POPULATION	2020 Estimated Population	12,493	72,857	155,155
	2025 Projected Population	13,124	76,486	162,762
	2010 Census Population	12,368	60,319	133,393
	2000 Census Population	7,116	37,023	97,331
	Projected Annual Growth 2020 to 2025	1.0%	1.0%	1.0%
	Historical Annual Growth 2000 to 2020	3.8%	4.8%	3.0%
	2020 Median Age	36.5	38.4	40.2
HOUSEHOLDS	2020 Estimated Households	4,721	26,920	60,288
	2025 Projected Households	4,940	28,191	63,046
	2010 Census Households	4,482	21,223	49,896
	2000 Census Households	2,246	11,771	34,440
	Projected Annual Growth 2020 to 2025	0.9%	0.9%	0.9%
	Historical Annual Growth 2000 to 2020	5.5%	6.4%	3.8%
RACE AND ETHNICITY	2020 Estimated White	79.9%	81.9%	83.1%
	2020 Estimated Black or African American	3.8%	3.9%	4.2%
	2020 Estimated Asian or Pacific Islander	12.3%	10.6%	9.0%
	2020 Estimated American Indian or Native Alaskan	0.3%	0.3%	0.3%
	2020 Estimated Other Races	3.7%	3.3%	3.4%
	2020 Estimated Hispanic	4.4%	4.1%	4.2%
INCOME	2020 Estimated Average Household Income	\$148,103	\$176,161	\$163,900
	2020 Estimated Median Household Income	\$111,619	\$128,131	\$118,645
	2020 Estimated Per Capita Income	\$55,972	\$65,099	\$63,721
EDUCATION (AGE 25+)	2020 Estimated Elementary (Grade Level 0 to 8)	0.7%	0.7%	0.8%
	2020 Estimated Some High School (Grade Level 9 to 11)	0.9%	1.0%	1.1%
	2020 Estimated High School Graduate	8.4%	7.6%	9.1%
	2020 Estimated Some College	12.4%	12.7%	14.0%
	2020 Estimated Associates Degree Only	7.9%	6.5%	6.4%
	2020 Estimated Bachelors Degree Only	39.6%	40.4%	39.5%
	2020 Estimated Graduate Degree	30.0%	31.1%	29.1%
BUSINESS	2020 Estimated Total Businesses	596	2,982	7,804
	2020 Estimated Total Employees	8,486	30,428	101,714
	2020 Estimated Employee Population per Business	14.2	10.2	13.0
	2020 Estimated Residential Population per Business	21.0	24.4	19.9

